

CONVENTIONAL LIGHTING FIXTURES - FLOODLIGHTS

FL.. Series - Copper free aluminium or Stainless steel AISI 316 L



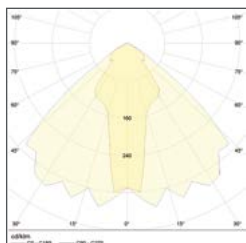
- Available in a wide range of wattage, FL-Series can host high pressure sodium or metal halide lamps and can be equipped with symmetrical narrow or wide beam reflector to satisfy different application requirements
- FL- Floodlights are ideally suited for large-scale areas and street, sidewalk or perimeter illumination
- Possibility to apply an OFF-SHORE painting cycle which increases the surface protection of floodlights making them suitable also for marine environments
- Manufactured in copper-free aluminium or AISI316L stainless steel, FL.. Series have an excellent corrosion resistance
- To simplify installation and maintenance, floodlights are supplied complete with an integral Ex e connection box and AISI304 stainless steel universal mounting bracket.

TECHNICAL FEATURES

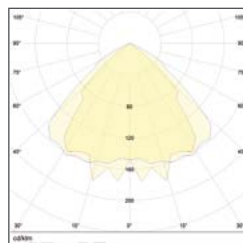
Material	Copper-free aluminium Stainless steel AISI 316 L (ordering codes upon request)
IP rating	IP66
Ambient temperature range	-50°C to + 55°C
Approvals	ATEX: 00ATEX0023X - IECEx: INE 16.0038X EAC: RU C-IT.BH02.B.00616/20 – ECAS 21-04-10283 E21-04-021857
Marking	II 2 GD Ex de IIB+H2 T(**) Gb Ex tb IIIC T(**) Db IP66 ** T4/T135°C, T3/T200°C, T2/T205°-240°C
Gaskets	Gasket made of Nitrile Rubber (NBR) on flat joint
Surface treatment	Polyurethane painting cycle - Blue RAL5014 (other colour available upon request) Internal anticondensate painting/AISI 316 L version unpainted
Entries	N° 2 entries M25x1,5
Included accessories	AISI 316 L Stainless steel screws and AISI304 Stainless steel adjustable bracket
Lamps	Included
Rated operation voltage (UE)	See table
Frequency	See table
Power factor	> 0,95
Accessories	N° 1 brass nickel chrome plated plug + N° 1 brass nickel chrome plated cable gland PNA type c/w set of inner seals
Optional accessories	Protection guard/Special brackets for pole mounting
Options upon request	HOT INSTANT RESTRIKE solution available via twin-arc lamp assuring immediate hot instant restrike ignition with flux that will reach 80% of the nominal lamp flux in about 3 minutes. HOT INSTANT RESTRIKE solution also available via INSTANT RESTRIKE BALLAST , assuring immediate hot instant restrike ignition with 80% of the lamp nominal flux in 7 seconds. (for high pressure sodium version)

Photometric light curves

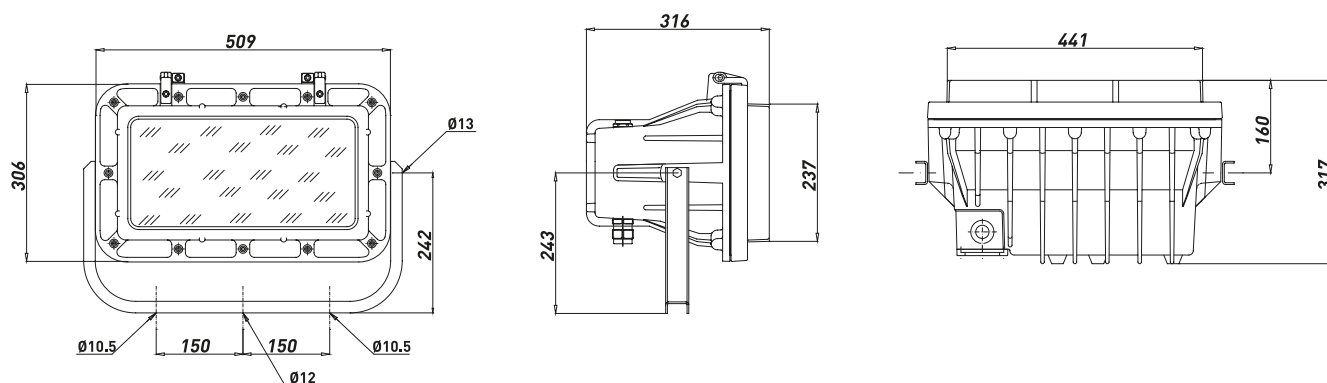
FL-SA IM HG



FL-SA IM HG wide beam



Dimensions FL



FL.. Floodlights wide beam

TYPE - WIDE BEAM	CODE	LAMP [W]	LAMP. TYPE	WEIGHT [Kg]	VOLTAGE	FREQUENCY	AMBIENT TEMPERATURE	T.CLASS
FL-15SA	A01010A510003	150	HPS	22.70	230 V*	50HZ**	(-50 °C;+55 °C)	T3
FL-25SA	A01010B510003	250	HPS	23.80	230 V*	50HZ**	(-50 °C;+55 °C)	T3
FL-40SA	A01010D010002	400	HPS	25.00	230 V*	50HZ**	(-50 °C;+55 °C)	T3
FL-25IM	A01011B510003	250	METAL HALIDE	23.80	230 V*	50HZ**	(-50 °C;+55 °C)	T3
FL-40IM	A01011D010003	400	METAL HALIDE	22.80	230 V*	50HZ**	(-50 °C;+55 °C)	T3

*220 V and 240 V versions available upon request

**60 Hz available upon request

FL.. Floodlights narrow beam

TYPE - NARROW BEAM	CODE	LAMP [W]	LAMP TYPE	WEIGHT [Kg]	VOLTAGE	FREQUENCY	AMBIENT TEMPERATURE	T. CLASS
FL-15SA	A01010A510002	150	HPS	22,7	230 V*	50HZ**	(-50 °C;+55 °C)	T3
FL-25SA	A01010B510002	250	HPS	23,8	230 V*	50HZ**	(-50 °C;+55 °C)	T3
FL-40SA	A01010D010004	400	HPS	25	230 V*	50HZ**	(-50 °C;+55 °C)	T3
FL-25IM	A01011B510002	250	METAL HALIDE	23,8	230 V*	50HZ**	(-50 °C;+55 °C)	T3
FL-40IM	A01011D010002	400	METAL HALIDE	22,8	230 V*	50HZ**	(-50 °C;+55 °C)	T3

* 220 V and 240 V version available upon request

**60 Hz available upon request